



*Celebrating 7 years +
Successful Educational Cooperation*



Six Years Integrated Programme (3+1+2)

**B.TECH
FROM
SRI PADMAVATI MAHILA VISVAVIDYALAYAM
(WOMEN'S UNIVERSITY), TIRUPATI, AP, INDIA**

**B.S & M.S
FROM
BLEKINGE INSTITUTE OF TECHNOLOGY, SWEDEN**



**Admission Booklet
FOR PROSPECTIVE CANDIDATES
Academic year (2023-2024)**





About Sri Padmavati Mahila Visva Vidyalyayam University (SPMVV)

Sri Padmavati Mahila Visvavidyalayam (University for Women) was founded in the year 1983 by Sri N.T.Rama Rao, the then Chief Minister of Andhra Pradesh, with the fervent desire to train women students as better builders of the Nation and to inculcate skills of leadership in all aspects of life.

The university is accredited with "A+" grade by NAAC. The university is aware of its role in a larger international academic community and in pursuance of this, the University has been reaching out to the different parts of the world for collaborative programmes, research networks, student exchanges and so on.

The Center for International Relations is established in February 2016. According to MHRD NIRF 2020,

SPMVV has stood up top position among women's universities in India and could accommodate in Rank Band **151-200** for University category and obtained 42 Rank in Pharmacy category.

SPMVV also obtained with **Gold** University Rating through **QS** IGAUGE by QS-ERA India Pvt. Ltd. SPMVV is a multi faculty pioneering institution of general and professional/vocational education in the state of Andhra Pradesh. The faculties are divided into 4 schools offering 59 courses apart from doctoral programs.



About BTH

Blekinge Institute of Technology, BTH, is a public university established by the Government of Sweden. BTH has a distinctive focus on the digitalisation of society and sustainability. Our task is to contribute to a more sustainable societal development through higher education, research, and innovation.

The study programmes are of high quality, student-centred, and linked to research, intended for national and international students. Our education focuses on society's future needs and challenges and is carried out in close collaboration with society at large. We offer study programmes in different cycles(under graduation, post graduation and doctoral studies), as well as single-subject courses, which are given both on campus and through remote learning. The programmes for international students are offered in English as medium of instruction.

The educational environment supports the students in becoming good colleagues, leaders, and innovators with the knowledge and ability to predict and generate changes and external engagement with broader society.

Additionally, the private sector contributes by making us more attractive to ensure that our education and research maintain high quality and relevance.

With a degree from BTH, students create conditions for society's development in digitalisation and sustainability.

BTH is ranked no 1 in Europe & no 5 in the world in the area of Software Engineering. BTH is ranked among top 650 in the area of Computer Science according to QS 2021/2022 ranking.



About SPMVV- BTH Cooperation

SPMVV and BTH signed the memorandum of cooperation under the coordination of Government of Andhra Pradesh & Andhra Pradesh State Council of Higher Education in the year 2016 and renewed in 2022.

Today, SPMVV and BTH completes 7 years of cooperation in field of higher education and research. From 2017, SPMVV and BTH collaborated actively on 3+1 Double Degree Bachelor Programme (B.Tech /B.S). in the area of Computer Science & Engineering. Several students received merit scholarships from BTH for pursuing Bachelor and master degree programmes at BTH. The collaboration continued successfully despite the Covid-19 challenges.

The aim of the cooperation is to empower the women engineers with global competence, who will be able to compete successfully in the labor market. The cooperation provides foundation for students excel in the either industrial or research career. Aligning the ambitions, some of the graduates now contributing to the Swedish Industry.

In 2023, the collaboration is converted in to "**Six Year Integrated Programme**" for the department of Computer Science and Engineering and also extended their collaboration in the area of Artificial Intelligence & Machine learning aligning the changing demands of the industry.

During the years, many faculty members and officials from BTH, Sweden visited SPMVV and vice - versa.



2. Specialisation, Degrees and Intake

The student will be enrolled into six years international collaborative programme ((B.Tech and B.S + M.S) (3+1+2)), where the student study three years of mandatory at School of Engineering and Technology, SPMVV and three years of education at Blekinge Institute of Technology, (BTH) Sweden leading to degree of Four Year Bachelor of Technology (B.Tech) from SPMVV and B.S & M.S from BTH, Sweden

OFFERED PROGRAMMMES, DEGREES AND SEATS

1) INTEGRATED PROGRAMME IN COMPUTER SCIENCE & ENGINEERING (10)

- Undergraduation: B.Tech from Computer Science & Engineering from SPMVV India, B.S in Computer Science/ B.S in Computer Science in Specialisation “**Artificial Intelligence and Machine learning**” from BTH, Sweden
- Postgraduation: M.S in Computer Science or M.S in Software Engineering or M.S in Computer Science in Specialisation “**Artificial Intelligence and Machine learning**” from BTH, Sweden from BTH, Sweden

EXIT OPTION WITH BACHELOR STUDIES

The enrolled student can exit the programme after successful completion of 4 years of study i.e. 3 years at SPMVV and one year at BTH with a Bachelor of Technology degree, which will be awarded by SPMVV by accrediting the one year (two semesters) mandatory education credits (includes UC project) from Blekinge Institute of Technology, Sweden through transfer of credits to SPMVV. The enrolled students enrolled will also have possibility to seek a bachelor's degree from BTH Sweden after completion of 4 years education under double degree cooperation. The information on the degree's awarded is mentioned above.



3. Masters programmes at BTH

The following masters programme are offered under Integrated programmes with SPMVV, India*.

COMPUTER SCIENCE

The Master's programme in computer science is a broad education with the opportunity to study several courses in the computer science field. The programme requires significant knowledge in programming. If you are interested in a specific area, you can profile and deepen your knowledge in this field through elective courses. The programme has three main directions: IT security, Intelligent Systems, and Distributed and Parallel Systems.

SOFTWARE ENGINEERING

The Master's programme in Software Engineering deals with the complex challenges facing the software developers of the future. You acquire a wide understanding and base of knowledge through education and training in advanced concepts within software engineering, covering the entire development process. You learn how to construct and test software products to meet the challenges of tomorrow, with high demands on efficiency and quality. You also learn how to reflect upon and improve modern development processes. From start to finish – each process, step and action

The education provides you with the skills and knowledge required to engineer software systems from the initial planning and scoping of projects to the process of development, testing and delivery of the software system itself. The courses cover both engineering and working methodology and you will study subjects such as project planning, software quality, and research methodology.



Masters programmes...

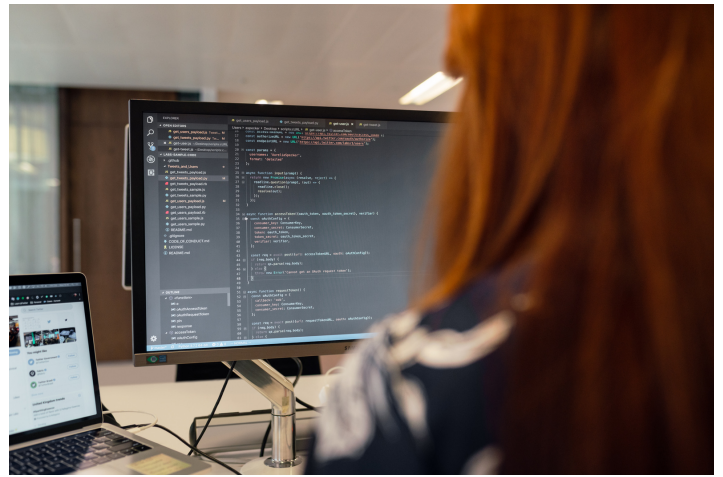
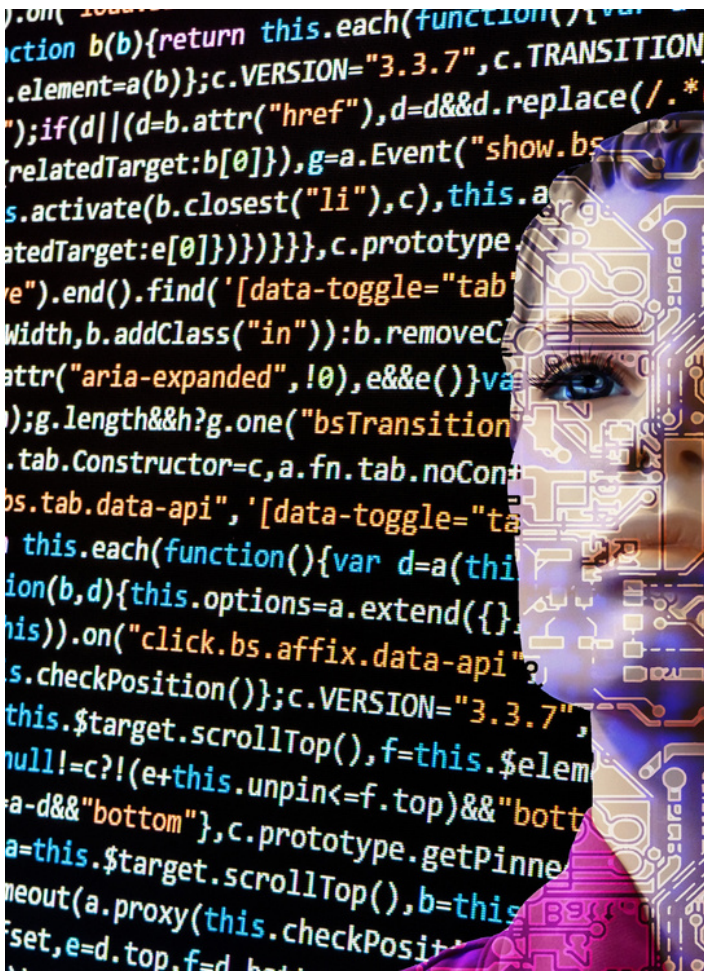
ARTIFICIAL INTELLIGENCE & MACHINE LEARNING

The Master's programme in AI and machine learning includes courses that provide engineers with knowledge and skills that are increasingly sought after in both industry and society as a whole. The education provides both theoretical and practical knowledge in a future-oriented field. The technology is already used today in various applications, such as decision support systems and autonomous vehicles, although it still has significant potential for further development. At BTH, we collaborate with industry, business, and other educational fields, which provides an education that is in line with reality and the developments in the industry.

The Master's programme provides a foundation that opens a career as a machine learning engineer, data analyst, specialist, strategic project manager or with another senior position. The number of possible industries and professional roles are increasing as the technology is used in even more domains.

MACHINE LEARNING & SENSORS

Complex systems are part of our everyday lives - from self-driving cars and energy infrastructure to health care and communication systems. To meet the future demands posed on such systems, multidisciplinary innovation is needed. The master program in Machine Learning, Sensors and Systems offers a solid foundation for being part of the development towards the sustainable technology of tomorrow's societies. You will acquire a broad set of skills and knowledge, understanding when model and/or learning based approaches are suitable and get hands on experience with hardware and sensors. The curriculum includes courses in both electrical engineering and computer science, e.g., signal processing, control theory, mechatronics and robotics, sensor systems, machine learning and AI. It is designed in close collaboration with industry, who stresses the need for expertise in this combined area.



4. Eligibility, Selection Criteria, Tuition Fee & Scholarships

ELIGIBILITY

Candidates satisfying the following requirements shall be eligible for admission into the programme.

Candidates qualified with Intermediate Education (10+2 pattern) conducted by the A.P. Board of Intermediate Education (BIE)/CBSE/ICSE with Mathematics, Physics, Chemistry subjects. The students should have a minimum 70% marks during Intermediate education.

SELECTION CRITERIA

The selection will be based on qualified ranks obtained by the candidates in JEE(MAINS) - 2023 /AP EAPCET - 2023 /TS EAMCET 2023 in the order of preference indicated.

TUTION FEE STRUCTURE

The following fee structure is applicable for the enrolled students.

Bachelor studies:

- The tuition for studies at SPMVV: 150 000 INR / year
- The tuition for studies at BTH, Sweden: 90 000 SEK/ year

Master Studies:

The tuition fee for the master studies at BTH, Sweden: 105 000 SEK/ year

BTH Scholarships

*The students are eligible to apply for BTH Scholarship (Tuition fee waivers) programme for two levels of tuition fee waiver on existing tuition fee for the fee movers for the at BTH i.e. The selection for BTH scholarship will be done as per the merit of academic excellence among all the international students. BTH Scholarships are subject to availability.



5. Living in Tirupati

TIRUPATI

Tirupati, located in Andhra Pradesh, India, is a vibrant city renowned for the Sri Venkateswara Temple, attracting millions of devotees annually. Nestled amidst the Eastern Ghats, the city offers a harmonious blend of spirituality, natural beauty, and cultural richness. The city's infrastructure includes a well-connected railway station, a network of highways facilitating easy access, and a domestic airport ensuring convenient travel options. Alongside its religious fervor, Tirupati boasts educational institutions, a diverse culinary scene. Life in Tirupati revolves around devotion, festivals, and the enchanting aura of the temple, making it an unforgettable destination for seekers of spiritual solace and cultural immersion.

CAMPUS OF SPMVV

The campus of SPMVV is called as "Green Campus" and it is situated in the middle of the Tirupati City.

The University is spread in a sprawling campus of 138.43 acres with buildings of Academic, Administrative and support services under the cover lush green nature.

The University campus is having hostels for women which can accommodate nearly 4500 students. The University has also day care center, Health care Centre, 2 canteens, 2 Auditoriums, Indoor Stadium, 400m track and playgrounds, Guest House, Press and Publication division, and Women Waiting Halls.

The enrolled students can avail the hostel facility in the lush green campus of SPMVV during their first three years of studies at SPMVV.



6. Transfer policy from SPMVV to BTH

As per the programme structure, the enrolled student shall be transferred to BTH to complete rest of the programme. For the successful transition from SPMVV to BTH, the student should satisfy the following mentioned conditions.

TRANSITION TO BTH

Transition to BTH: The student should finish a minimum of 120 credits*of BTH, i.e. approx. 70% of their education up-to first 6 semesters of studies at SPMVV for transition to BTH. The student should also pass have all the prerequisite courses identified by the BTH.

SPECIAL REQUIREMENT

The students, who have studied in other language (medium of instruction other than English) during the intermediate education should demonstrate to meet the English language requirement through an internationally approved English test such as IELTS or TOEFL. The students should meet the English requirement by IELTS or TOEFL before seeking an admission to the studies at BTH.

TOEFL: 575 / 90

IELTS: an overall mark of 6.5 and no section below 5.5

TRANSITION TO MASTER STUDIES

The student can continue the master studies at BTH. They can enter the master's studies by completing a minimum of 180 credits of BTH (which should include a minimum of 45 credits (from their studies at BTH) and should have passed all the prerequisite courses for the entry to master studies.

However, the master's degree will be awarded only after completion of all the courses at bachelor studies and master studies.

Note: One year full time studies is equal to 60 credits at BTH.



7. Residence Permits

REGULATIONS

As per the current regulations of migration board, the students should be able to show a minimum financial requirement of 9450 SEK (Sweden Kronas) per month for the entire planned study period at Sweden. Documentation certifying one's own must be provided at the time of applying student residence permit.

The student must show to migration board as per the mentioned details while applying for residence permit.

FOR BACHELOR STUDIES

The study period shall comprise of 10 months during the bachelor studies. The student should show minimum financial requirement of SEK 94 500, Approx. INR 7.2 Lakhs (As per the present currency exchange rate*)

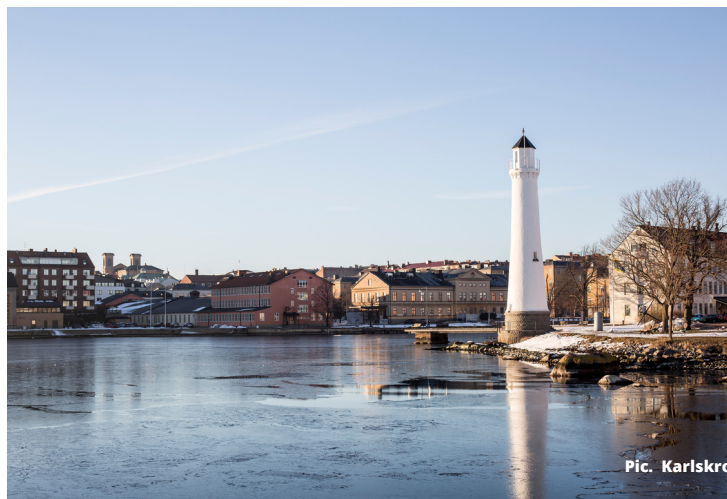
FOR MASTER STUDIES

The students should apply residence permit for studying masters after seeking an admission to master's programme after completing the bachelor studies. The student should show a minimum financial requirement of 226 800 SEK, approx. 17.2 Lakhs (as per the present exchange rate*)

For more information "student residence permit" regulations:



Note: BTH's support office in India will provide the guidance on residence permit / travel issues. However, students are responsible to show the required financial proofs to the migration authorities while applying for student residence permit (VISA). Either BTH or SPMVV will not be responsible for the rejections caused on the grounds of in-sufficient financial funds/statements in front of Migration Board. Students have to adhere to migrations regulations applicable in the year of transition to BTH. The currency exchange / requirements of migration board can change based on the factors, which are not in the control of both SPMVV or BTH.



8. Living in Karlskrona

COST OF LIVING

Like any where else the cost of living is depended on the individual life style. According the migration board, the student should meet the amount of 9450 SEK/ month towards living expenses during the stay in Sweden.

An estimated average monthly expenses as follows:

- Food: SEK 2,500
- Accommodation: SEK 4,500
- Local travel: SEK 550
- Phone/internet: SEK 400
- Miscellaneous: SEK 1,500
- Total: SEK 9,450

Tips:

Karlskrona being a small town, many of our students take advantage of that by using "cycle" instead of public transportation for commuting. Students also share the apartments legally for minimising the accommodation cost.

For more tips:



INSURANCE

The students are fully protected by a comprehensive insurance provided BTH. The insurance provides 24-hour coverage in Sweden. The insurance covers, Medical and Emergency Dental Care, Home transport cover, Personal Liability Cover, Legal expenses etc. The insurance is provided by kammarkollegiet,- a state authority under the Government of Sweden.

For more details about insurance:



For video about Karlskrona:





9.Student life in Karlskrona

ACTIVITIES

There are different types of student organisations like Blekinge Student union, Erasmus student network, KIDS (Students organisation for sports) organises different social activities in the campus.

Apart from the campus life, Karlskrona has an amazing environment – at the centre of the archipelago – where the proximity to the sea gives the opportunity for sailing, sea kayaking, scuba diving or fishing during the summer and long-distance ice skating or ice yacht sailing during the winter. There are several professional sports clubs in the town.

Many of our students play cricket and badminton in association with local clubs.

The city has a marine history, represented by the ubiquitous archipelago and various forms of naval activities. Karlskrona is considered to be so unique that UNESCO has placed the city on the World Heritage List.

Adjacent "towns - Ronneby & Karlshamn" also provides touristic places and also hosts different activities.

INDIAN COMMUNITY

BTH hosts largest number of Indian students in Sweden. The multinational companies like Ericsson, Telenor, NKT etc attracts engineers from India. This helped to form inclusive Indian community of approx. 500+ individuals comprised of students and families in and around Karlskrona. The community organises cultural evenings and celebrates Indian festivals to integrate the Indian culture with Swedish society and vice versa.

For information about the Blekinge student union:



For information about more activities in Blekinge county:





10. Innovation Activities in Karlskrona

BTH INNOVATION OFFICE

Given BTHs profile with education and research focusing on technology BTH campus is a vital location for innovation.

BTH supports students through BTH Innovation Office arranging seminars, workshops, hackathons, along with personal coaching along the innovation journey.

In addition to BTH Innovation Office are part of the local innovation support system containing of Blue Science Park and Blekinge Business Incubator, to mention a some. The innovation support network stretch outside Blekinge and covers the southern parts of Sweden, through BTH Innovation Office you reach a large network supporting innovative ideas.

BTH Innovation Office services are open for all students affiliated to BTH. Special considerations apply to international students based on their residence permit.

BLUE SCIENCE PARK

Blue Science Park is located on the extended Campus Gräsvik in close proximity to BTH.

Their mission is to drive technical advancements for the local companies in order to increase the companies innovative capabilities.

The vehicle to do so is close cooperation with companies, research and education.

BLEKINGE BUSINESS INCUBATOR

Blekinge Business Incubator focus on further develop the tech-based start-ups ideas through the early ide phases through incubation and acceleration with the mission to increase the number of successful startups in Blekinge.

Blekinge Business Incubator is labeled as an Excellence Incubation in Sweden.

OUR ALUMNI - -----TECH TALENT FORCE TO SWEDISH INDUSTRY



Left to right. Uttej Reddy (JNTUH-Skyraft, Sweden), Nanna Tejaswi (JNTUK - Arm Sweden), Apuroop Paleti (JNTUH- Ericsson), Sumeesha Marakani (JNTUH- Volvo Cars Sweden) Mahesh Chandra , AU, Qlik Sweden, Vishnu manasa devagiri (JNTUK- BTH)

Pic. Mattias Mattisson

11. Career in Sweden

Students can apply for work seeking residence permit for one year after completion of studies to seek employment or start their own business in Sweden. For more information on residence permit;



Graduates of integrated programme are successful in getting employment in Sweden in companies like, Axis, Ericsson etc.

Currently, there is a serious shortage of ICT Competence in Sweden* and further more there are less number of women in Engineering sectors. This open good opportunities for women who are opting engineering education in Sweden.

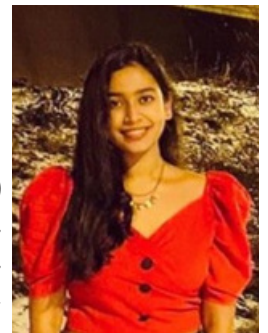
Equality in the workplace

Sweden has come a long way in making sure that women and men are treated equally in the workplace.

*Reference:<https://digital-skills-jobs.europa.eu/en/inspiration/research/it-competence-shortage-report-swedish-it-telecom-industries-2020>

An example of the profile of SPMVV student

Cherishma Konka
(CSE- Alumni 2018-2022)
Software Engineer,
Axis Communications,
Sweden.



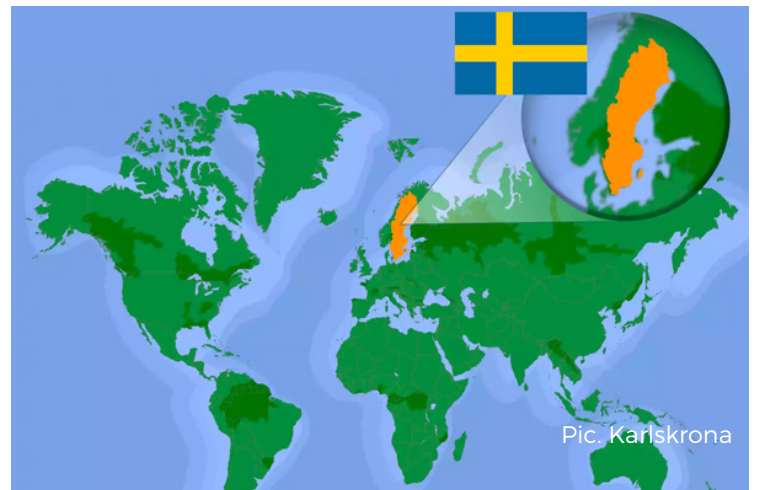
SALARY LEVELS

The starting salary levels for junior positions in engineering domain is approx. 32 000-39 000 SEK (Approx.2.4 Lakhs to 2.9 INR)/ Month in Sweden* according to survey done by a leading union in Sweden.

*Further reading on salary levels:

<https://www.saco.se/studieval/yrken-a-o/civilingenjor/>





12. About Sweden

For a sparsely populated country in the far north of Europe, Sweden has done remarkably well in establishing and maintaining an outstanding reputation abroad.

Sweden is a part of Scandinavia and the third largest country in Western Europe – almost the same size as Spain or France, and bigger than California, USA. Sweden is, however, a small country in terms of population, with only 10 million inhabitants – which is about 0.13% of the world population.

Today Sweden is one of the strongest economies in the world offering a high quality of life in a modern welfare society. It is a rich and well-educated country with large annual investments in education and research.

MULTICULTURAL COUNTRY

Sweden has become a multicultural country over the past fifty years. The official language is Swedish, but almost all Swedes are able to communicate in English.

A focus in the development of Swedish society has been on the environment. One reason for this is the Swedish population's emotional affinity with nature.

GENDER EQUALITY

Sweden has come a long way in making sure that women and men are treated equally in the workplace and in the society.

SAFE COUNTRY

Sweden is one of the safest and happiest countries in the world.

INNOVATIVE COUNTRY

The World Economic Forum (WEF) has ranked Sweden as one of the most competitive countries in the world in its Global Competitiveness Report, with top grades for macroeconomic stability and innovation capability.

HIGHER EDUCATION - HIGHLY RANKED

Higher education systems is ranked among top 5 in the world according to U21 Ranking.

KEY FACTS

- Capital: Stockholm
- Population: 10,521,556 people , 0.13 per cent of the world's population
- Life expectancy: Men 81.34 years , women 84.73 years
- Form of government: Constitutional monarchy, with parliamentary democracy – political power lies with the parliament and government; the monarch has ceremonial functions
- Currency: 1 krona (SEK) = 100 öre ≈ EUR 0.095
- Language: Swedish (main language)



For more information about Sweden.....



Pic. Philip Avesand



13.How to Apply, Enclosures & Key dates

Candidates are required to download the application form and Information booklet from the website: www.spmvv.ac.in. The duly filled-in application form with two sets of enclosures and application processing fee of Rs.1500/- in the form of DD drawn, in any Nationalized bank in favour of **"Dean, International Relations Office, SPMVV"** payable at Tirupati, should reach the office of Dean, International Relations Office, SPMVV, Tirupati, Andhra Pradesh, India either by post or in person. The last date of submission is 20-07-2023.

Office of the Registrar, SPMVV is not responsible for non-receipt or late receipt of applications sent by Post / Courier. Incomplete applications are liable to be summarily rejected. The students are advised to send a copy of the scanned version of the applications to indiarelations@bth.se, dirspmvv@gmail.com for reference.

ENCLOSURES

List of Documents to be attached with the Application Forms.

- Attested copies of the Secondary Education (10th Class) certificate.
- Attested copies of Higher Secondary Education (10+2 class pattern) certificate.
- Attested copies of Rank Card of IIT JEE (MAINS)-2023 / AP EAPCET- 2023/ TS EAMCET.- 2023
- Undertaking statement signed by the parent/guardian along with the applicant, stating that the applicant is capable enough to fund the minimum financial requirement (94 500 SEK / Approx. Rs. 7.2 Lakhs) for two semesters) in order to pursue education in Sweden (to be produced at the time of admission) for under graduation studies.
- DD of Rs.1500/- from any nationalized bank drawn in favor of "Dean, International Relations, SPMVV," Payable at Tirupati, A.P.



14. Key Dates, Admission Counselling, Key Contacts

KEY DATES

- Last date of receipt of application: **24-07- 2023**
- Date of Admission & Counselling: **26-07- 2023**

ADMISSION COUNSELLING

Candidates are advised to attend the counselling with all original certificates and DD for Rs.1,50,000/- drawn on any Nationalized bank, in favour of "Dean, International Relations Office, SPMVV" payable at Tirupati. No separate intimation letters will be communicated.

More number of candidates may attend the counselling than the number of available seats. Attending the counselling doesn't guarantee admission. No separate intimation letters will be communicated and more number of candidates may attend the counselling than the number of available seats and attending the counselling doesn't guarantee admission.

VENUE OF ADMISSION COUNSELLING

Seminar Hall of Saaveri Guest House, Sri Padmavati Mahila Visvavidyalayam, Tirupati – 517 502, A.P., India

KEY CONTACTS

SPMVV, INDIA

PROF. P. VIJAYALAKSHMI

DEAN INTERNATIONAL RELATIONS OFFICE

SPMVV Tirupati, AP, India,

Ph: +91-9399920125,

Email: dirspmvv@gmail.com

PROF. V. SARITHA

HEAD & PROFESSOR OF CSE DEPT

SCHOOL OF ENGINEERING & TECHNOLOGY,

SPMVV Tirupati, AP, India,

Ph: +91-9390934349

Email: cseheadspmvv@gmail.com.

vsaritha@spmvv.ac.in

BLEKINGE INSTITUTE OF TECHNOLOGY, SWEDEN

MR.GURUDUTT VELPULA

DY INTERNATIONAL DIRECTOR &

DIRECTOR INDIA INITIATIVES

BTH, Karlskrona Sweden

Ph: +46-734405670

Email: gurudutt.velpula@bth.se

Indiarelations@bth.se

MR. PHANI SHEKAR GANDHAM

INTERNATIONAL COORDINATOR

BTH INDIA STUDENT SUPPORT OFFICE

C/o SIASEU, Hyderabad, INDIA

Ph: +91-9959655670

Email: phani@siaseu.com



Top reasons to study at BTH

Choosing BTH means that you will be part of an international, open and safe environment. Our ambition is to provide high quality education which will prepare you for a better future career. All students and staff at BTH are provided with a positive and sustainable work and study environment which fosters prominent academic research and education and is stimulating, safe and secure.

HIGH QUALITY EDUCATION

BTH's educational programmes are evaluated as high quality by the Swedish Higher Education Authority (UKÄ), the national government agency which evaluate the quality of higher education and research in Sweden. [See the report](#)

BTH is a university characterised by closeness, with short distances between management, teachers and students. Our size makes it possible for us to adapt and gives us a large flexibility for change and innovation.

APPLIED RESEARCH

BTH has an extensive external engagement with industries and society. This close cooperation permeates our education and research. Our Master's Programmes therefore have a strong focus on applied research and provide insights on current societal challenges which will develop an interest among our students for a career in research and innovation.

WORLD CLASS RESEARCH

BTH is a modern and profiled university. The goal of BTH is to be a leading institution in the world in the universities profile areas. For example BTH's research in Software Engineering is now ranked second in the world and number one in Europe, in terms of the number of publications in leading journals in the field.



CONNECTION TO THE INDUSTRY

BTH designs the educational programmes with input from industry and adopts various teaching methods that hone the students' employability skills to be successful in the future workplace. BTH is characterised by cooperation and co-production with surrounding society. It is of great importance that research and education is conducted in cooperation with community stakeholders, which increases the students' connections to professional life during their studies and makes the students become more attractive on the labour market. When we cooperate with wider society, we can better contribute to solving the challenges facing society.

INTERNATIONALISATION

Internationalization is a very strong pillar of BTH. Our students and staff hail from 70 different nationalities which creates a diversified and creative learning environment. The goal of BTH is to provide every graduate with international understanding and international exposure.

BTH is collaborating with leading institutions in the world. BTH has been collaborating successfully with Indian universities since last two decades.

